

RETRIEVING NMR DATA

JB Stothers NMR Facility
Materials Science Addition 0216
Department of Chemistry
Western University

1. INTRODUCTION

1.1. About these Notes and Related Notes

These notes describe how to retrieve NMR data from the NMR facility's data server using Secure File Transfer Protocol (SFTP) on a Windows PC. No additional notes need to be consulted in order to understand the material presented here. For MAC or LINUX users, these notes can still be used as a guideline when setting up your SFTP software.

1.2. About SFTP

SFTP is a network protocol that permits a user to transfer files from a remote computer to the user's local computer. Generally all the user requires to transfer the files is the remote computer's hostname, plus the user's log-in name and password on the remote computer. There are numerous SFTP programs available, these instructions will describe how to set-up WinSCP for Windows. MAC or LINUX users can use FileZilla as their SFTP program.

1.3. SFTP Information for the NMR Data Server

Your SFTP software will require a hostname, a user name, a password and potentially a port number (see Table 1.1). Please contact an NMR facility staff member to get the host name of the data server and your group's NMR facility password. Your group's user name will be your supervisor's surname, typed in lower-case letters. The port will be 22 (SFTP).

Table 1.1. Information Required by SFTP Software

Information	Value
Host name	Ask NMR facility staff
User name	Supervisor's last name (lower case only)
Password	Ask NMR facility staff
Port #	22 (SFTP)

2. INSTALLING AND SETTING UP WINSCP SOFTWARE

2.1. WinSCP Installation

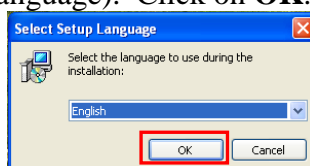
- 1) Go to WinSCP's homepage: <http://winscp.net/eng/index.php>
- 2) Click on the [\[Go to Download page\]](#).
- 3) Under the heading **Downloading WinSCP**, click on [Installation package](#) on the most recent version of the software.

RETRIEVING NMR DATA

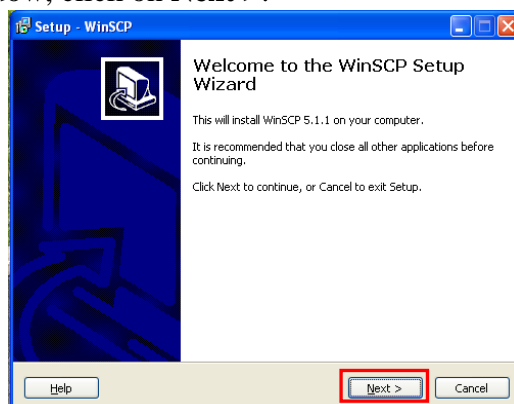
- 4) A pop-up window will appear (make sure pop-ups are allowed in your browser); click on **Save File** and save the executable file to the desktop (or your preferred location).
- 5) Navigate to wherever you have saved the winscpsetup.exe file and double-click on the file; installation will begin. If prompted, click on **Run**.



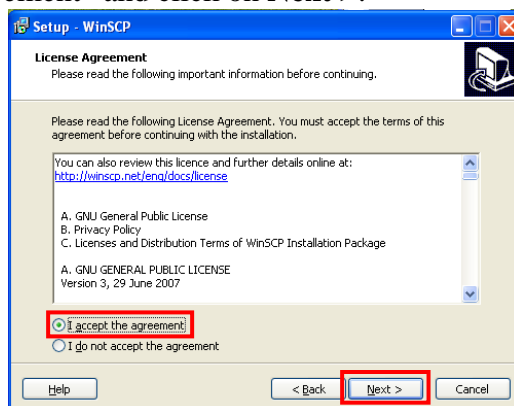
- 6) Select English (or your preferred language). Click on **OK**.



- 7) In the setup welcome window, click on **Next >**.

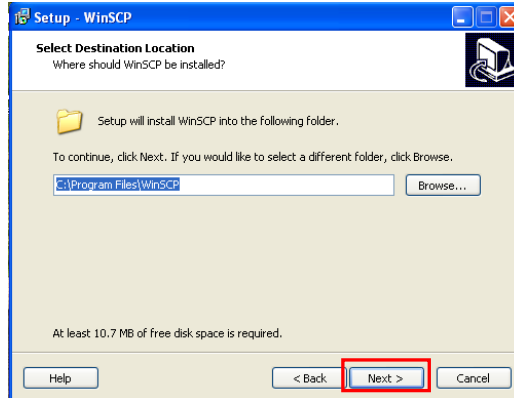


- 8) Click on “I accept the agreement” and click on **Next >**.

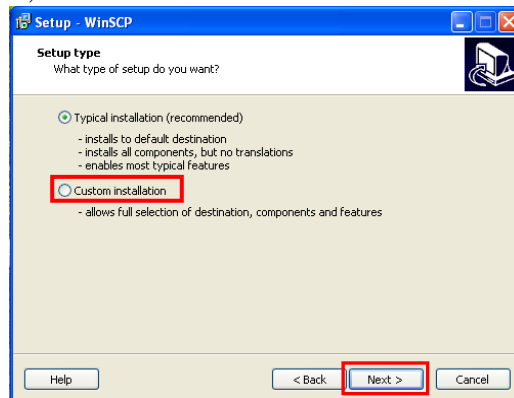


RETRIEVING NMR DATA

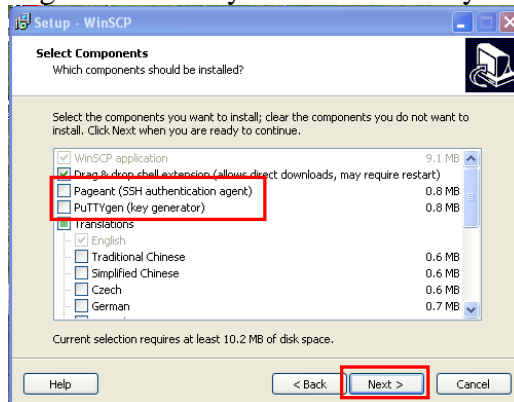
9) Navigate to wherever you would like to install the software, then click on **Next >**.



10) Click on Custom installation, then click on **Next >**.

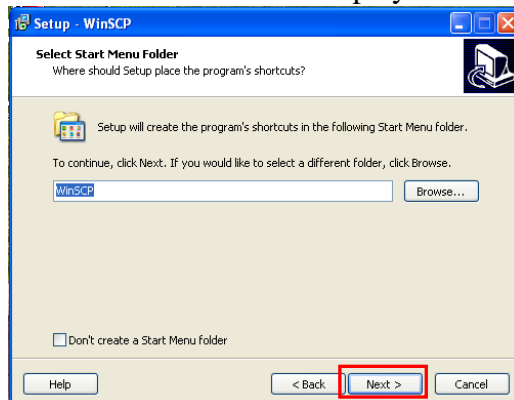


11) Deselect Pageant and PuTTYgen. Select any translations that you would like. Click on **Next >**.

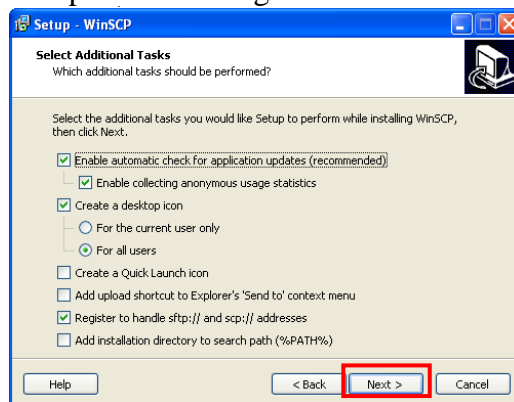


RETRIEVING NMR DATA

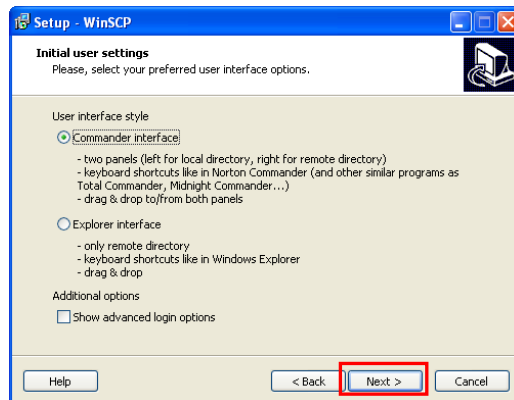
12) Select where you want the Start menu button to be displayed. Click on **Next >**.



13) Select which parameters you would like. I would deselect Add upload shortcut to Explorer's 'Send to' context menu, but keep the remaining defaults. Click on **Next >**.

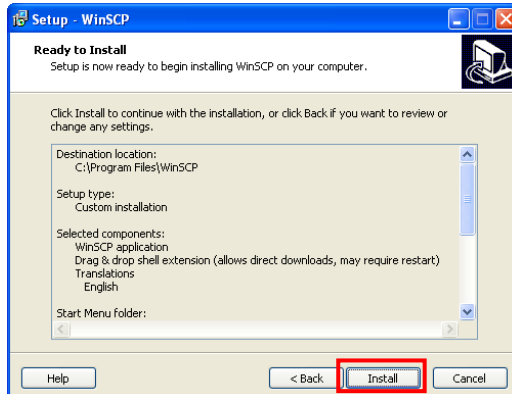


14) Select Commander interface. Click on **Next >**.



RETRIEVING NMR DATA

15) Review installation settings and click on **Install**. Installation is very rapid.



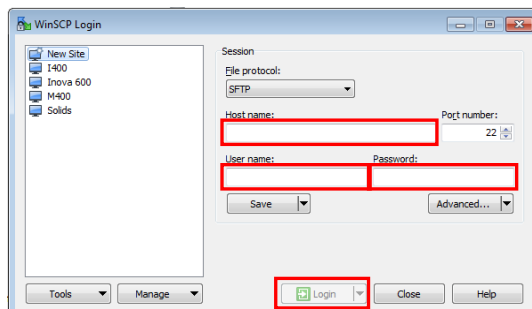
2.2. WinSCP Setup

1) Deselect **Open Getting started page**. Click on **Finish**.



2) Enter the following information:

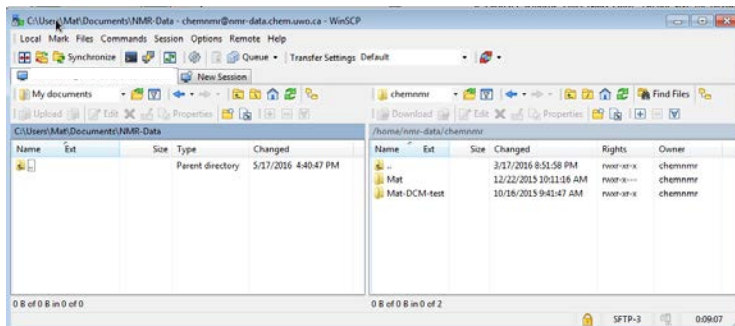
- In the **Host name:** field, enter the NMR facility's data server's host name
- In the **User name:** field, enter your supervisor's last name in lower case letters
- In the **Password:** field, enter your group's password.
- Click on **Login**.



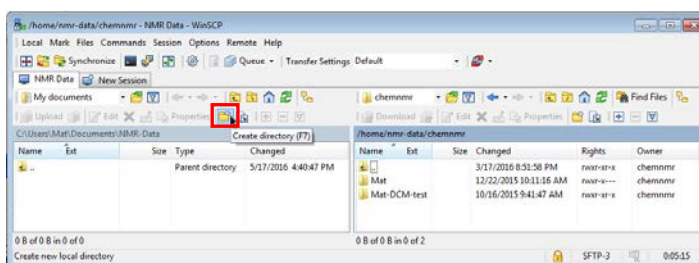
3) A screen displaying two columns will be displayed. Your group's NMR data is the right-hand column, your computer is the left-hand column, and the directory you are currently in is displayed in the blue horizontal banner at the top of each column. In the left-hand column, navigate to

RETRIEVING NMR DATA

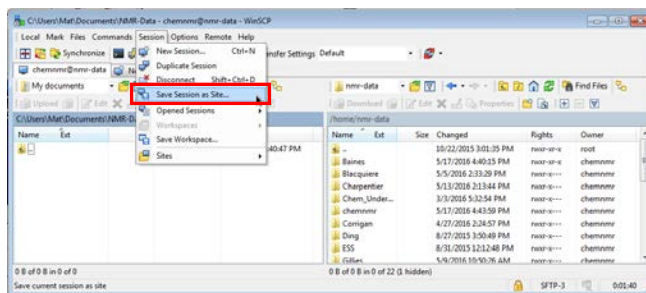
whichever folder your group (or you) stores its NMR data. If you need to change drives, use the drop-down list just above the column's blue banner.



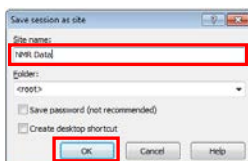
- 4) If you want to create a new directory, click on **Create Directory** (or click F7). In the pop-up window, enter the name of the new directory and click on **OK**.



- 5) On the top menu, select **Session** → **Save Session as Site...**



- 6) In the pop-up window that appears, in the Site name: window, enter NMR Data. Do not save the password. Click on **OK**.

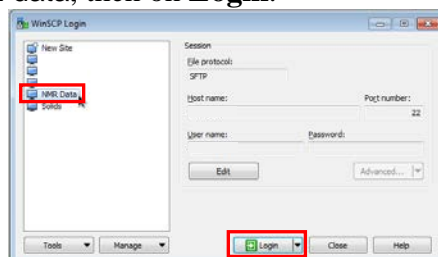


- 7) When finished, from the top menu, select **Commands** → **Quit** (or click F10 or click the X in the top-right hand corner) to close the WinSCP.

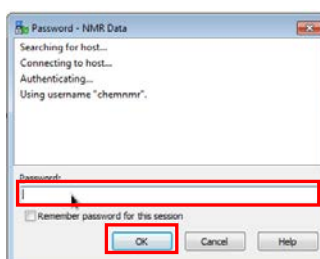
RETRIEVING NMR DATA

3. TRANSFERRING NMR DATA USING WINSCP

- 1) Open WinSCP, click on NMR data, then on **Login**.



- 2) When prompted, enter your group's password and hit **OK**.



- 3) On the right-hand column, double-click on your data folder and then navigate to your desired folder(s).
 - 4) Select the folder(s) that you would like to copy and drag the folder(s) into the appropriate folder on the left-hand column. Repeat until all desired data has been transferred.
 - 5) When finished, from the top menu, select **Commands** → **Quit** (or click F10 or click the X in the top-right hand corner) to close WinSCP.
-